

MONTHLY MEMBERSHIP PROGRESS REPORT

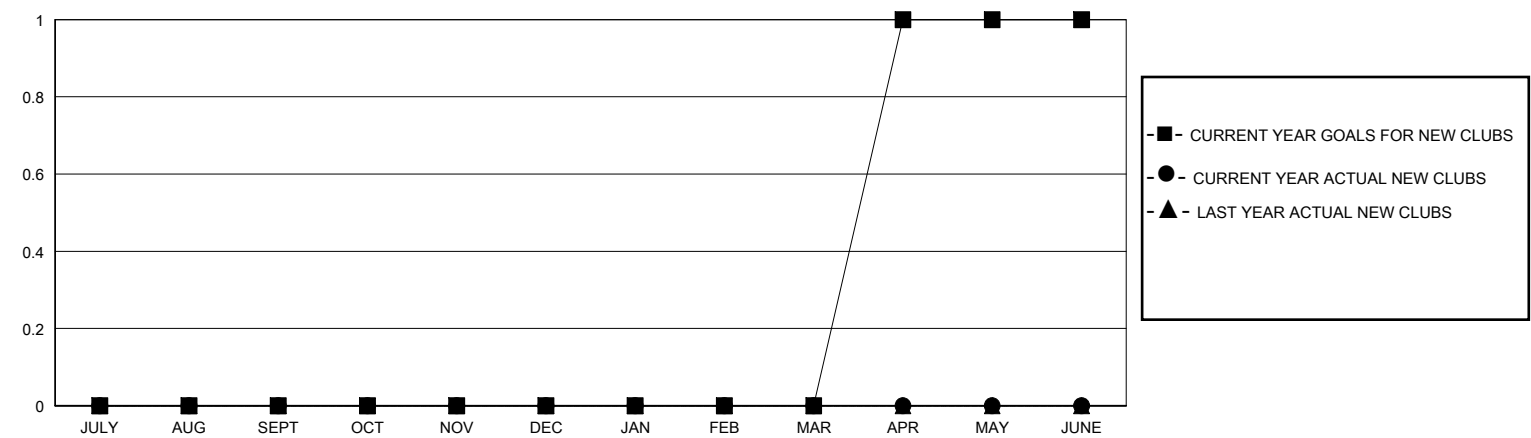
District 11 B2

Results as of: 10/31/2025

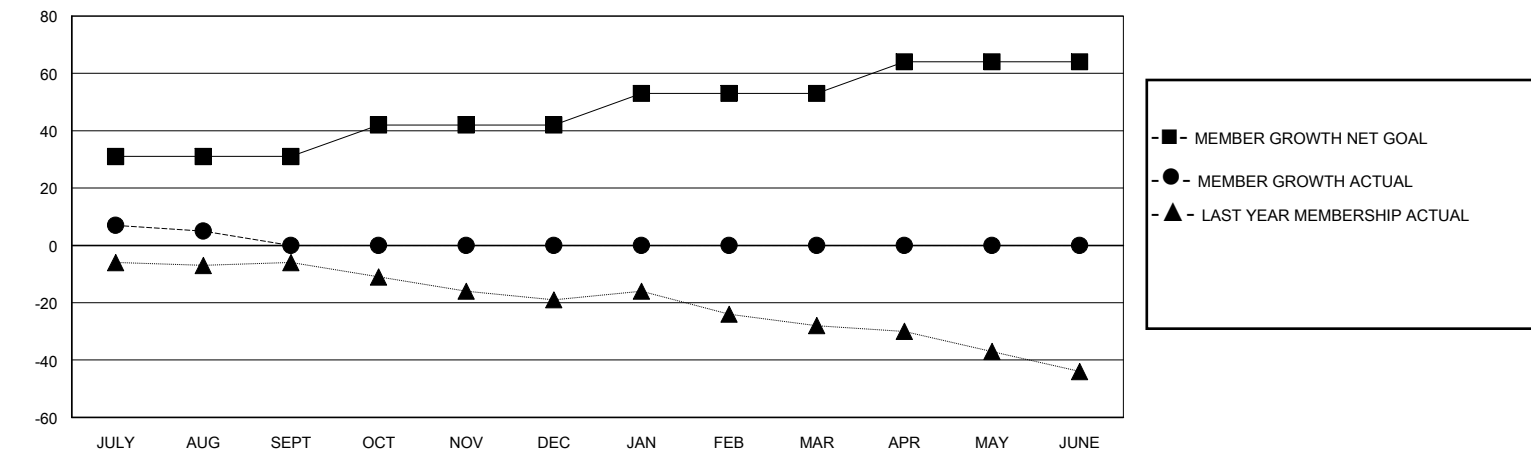
GMT: LOCATION MICHIGAN GMT CA			
Clubs			
RESULTS FOR 2025-2026			
QUARTER	NEW CLUB GOAL	NEW CLUBS	DROPPED CLUBS
JULY/AUG/SEPT	0	0	0
OCT/NOV/DEC	0	0	0
JAN/FEB/MAR	0	0	0
APR/MAY/JUNE	1	0	0

Members			
RESULTS FOR 2025-2026			
QUARTER	MEMBER GROWTH NET GOAL	MEMBER GROWTH ACTUAL	DROPPED MEMBERS ACTUAL (including transfers)
JULY/AUG/SEPT	31	18	18
OCT/NOV/DEC	11	9	6
JAN/FEB/MAR	11	0	0
APR/MAY/JUNE	11	0	0

GOALS AND ACTUAL NEW CLUBS CUMULATIVE



GOALS AND ACTUAL MEMBERS CUMULATIVE



DROPPED CLUBS: 0		11 CLUBS OF 31 ADDED 1 OR MORE NEW MEMBERS	<u>GENDER DISTRIBUTION</u>	
			MALE	491 (63.19%)
			FEMALE	285 (36.68%)
<u>DROPPED MEMBERS</u>		CLICK HERE FOR CUMULATIVE MEMBERSHIP DATA		
DECEASED	6		TOTAL FAMILY UNIT MEMBERS 203	
CLUB CANCELLED	0			
OTHER	18		FAMILY MEMBERS PAYING HALF DUES 103	
TOTAL	24			